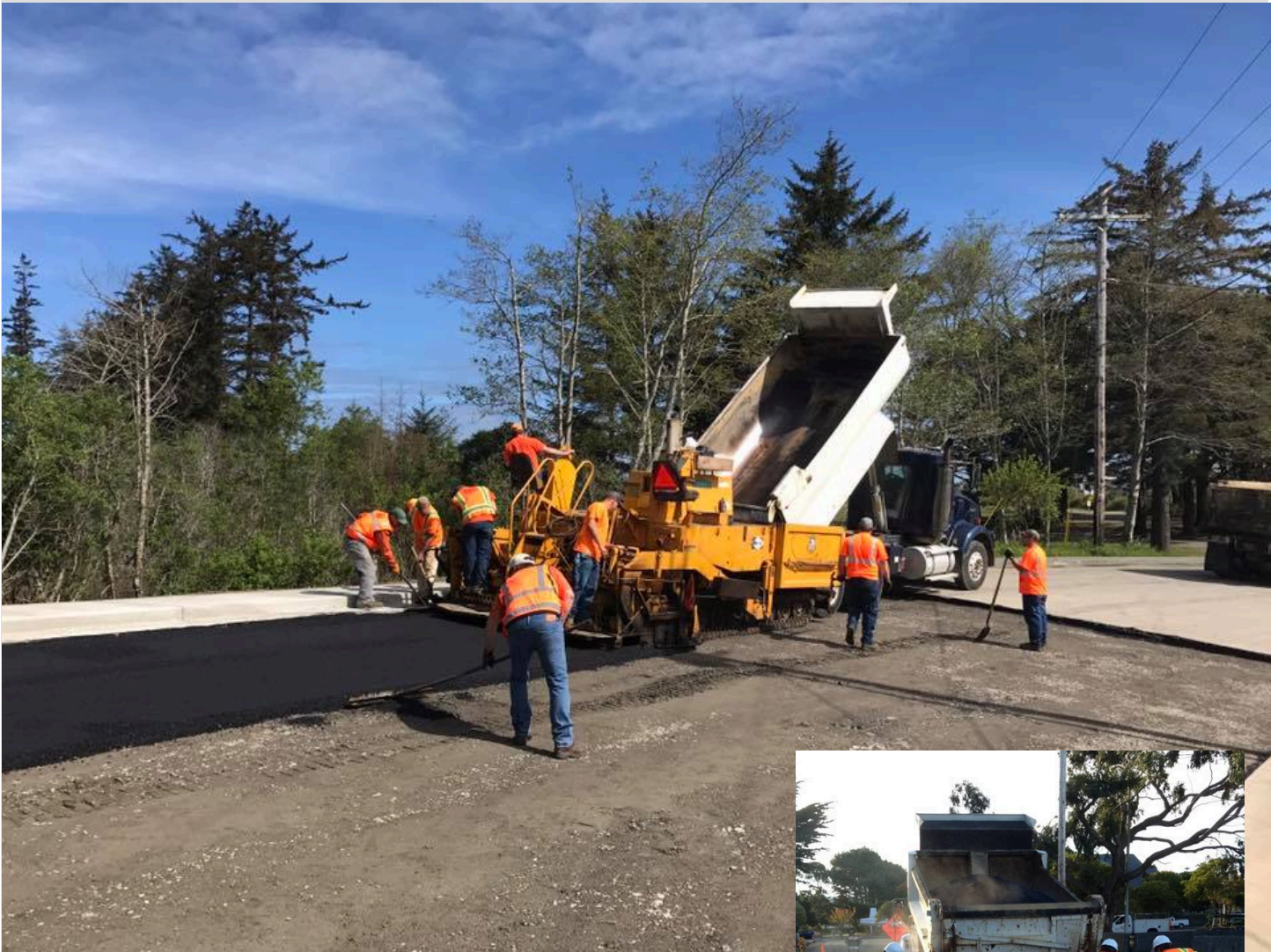


City of Crescent City



2017 Pavement Management Plan

Prepared for the Del Norte Local
Transportation Commission by the Del Norte
County Community Development Department
Roads Division

Pavement Management Background

The City has 23 miles of roads that it maintains. Of the 23 miles, approximately 21.506 miles of paved roads were evaluated as part of this Plan. The City uses the Pavement Surface Evaluation and Rating System ("PASER") to rate the City's paved surfaces on a periodical basis. The City has used the PASER System since 2008. The system is based on a 1 to 10 scale with a one representing a failed surface and a 10 representing an excellent surface. Figure 1 on the following page illustrates the rating system. The average PASER Rating for all City paved roads is 6.186.

PASER RATING SYSTEM¹

Surface Rating	Visible Distress*	General conditions/treatment measures
10 Excellent	None.	New construction
9 Excellent	None	Recent overlay. Like new.
8 Very Good	No longitudinal cracks except reflection of paving joints. Occasional transverse cracks, widely spaced (40' or greater). All cracks sealed or tight (open less than 1/4").	Recent sealcoat or new cold mix. Little or no maintenance required.
7 Good	Very slight or no raveling, surface shows some traffic wear. Longitudinal cracks (open 1/4") due to reflection or paving joints. Transverse cracks (open 1/4") spaced 10' or more apart, little or slight crack raveling. No patching or very few patches in excellent condition.	First signs of aging. Maintain with routine crack filling.
6 Good	Slight raveling (loss of fines) and traffic wear. Longitudinal cracks (open 1/4"– 1/2"), some spaced less than 10'. First sign of block cracking. Sight to moderate flushing or polishing. Occasional patching in good condition.	Shows signs of aging. Sound structural condition. Could extend life with sealcoat.
5 Fair	Moderate to severe raveling (loss of fine and coarse aggregate). Longitudinal and transverse cracks (open 1/2") show first signs of slight raveling and secondary cracks. First signs of longitudinal cracks near pavement edge. Block cracking up to 50% of surface. Extensive to severe flushing or polishing. Some patching or edge wedging in good condition.	Surface aging. Sound structural condition. Needs sealcoat or thin non-structural overlay (less than 2")
4 Fair	Severe surface raveling. Multiple longitudinal and transverse cracking with slight raveling. Longitudinal cracking in wheel path. Block cracking (over 50% of surface). Patching in fair condition. Slight rutting or distortions (1/2" deep or less).	Significant aging and first signs of need for strengthening. Would benefit from a structural overlay (2" or more).
3 Poor	Closely spaced longitudinal and transverse cracks often showing raveling and crack erosion. Severe block cracking. Some alligator cracking (less than 25% of surface). Patches in fair to poor condition. Moderate rutting or distortion (1" or 2" deep). Occasional potholes.	Needs patching and repair prior to major overlay. Milling and removal of deterioration extends the life of overlay.
2 Very Poor	Alligator cracking (over 25% of surface). Severe distortions (over 2" deep) Extensive patching in poor condition. Potholes.	Severe deterioration. Needs reconstruction with extensive base repair. Pulverization of old pavement is effective.
1 Failed	Severe distress with extensive loss of surface integrity.	Failed. Needs total reconstruction.

*Individual pavements will not have all of the types of distress listed for any particular rating. They may have only one or two types.

¹ PASER Asphalt Roads Manual, Transportation Information Center, University of Wisconsin, Madison

Visual Illustration of Pavement Conditions by Rating



Best: New road or newly repaved. Almost no cracks, pavement is smooth and level. Just the very top of the aggregate is beginning to show.

Typical PASER rating is between 8 and 10.



Good: A little older, maybe ten years since paving. Low-level cracking showing up, aggregate exposed 30%, some smooth patching or utility cuts.

Typical PASER rating is between 7 and 8.



Fair: 15- to 20-year-old pavement. Extensive low-level cracking, some alligator and block cracking showing up, surface getting very weathered, dips and sags, many patches.

Typical PASER rating is between 5 and 6.



Poor: 20- to 30-year-old pavement. Medium to high level alligator and block cracking over most the road, some potholes, heavy weathering with aggregate, (individual gravel pieces), actually coming off the road. Poor patches edges breaking down many bumps and dips, some potholes.

Typical PASER rating is between 3 and 4.



Failed/Bad: Old pavement, probably paved in bits and pieces. Entire road is covered with medium to high level cracking, pieces of pavement can be picked out of road surface by hand, many unfilled potholes, patches on patches, bad dips and sags, may have missing sections of pavement. High level weathering where aggregate may be dislodged by kicking the surface with your foot. It may have bad slippage tearing the pavement. The road would need to be totally reconstructed at this point.

Typical PASER rating is below 2.

ATTACHMENT A

**RATING PAVEMENT
CONDITIONS**

Pavement Conditions by Road Classification June 30, 2017

Road Classification	Rating for Class	Road Miles	% of Total	Bad 0-2		Poor 3-4		Fair 5-6		Good 7-8		Best 9-10	
				Miles	%	Miles	%	Miles	%	Miles	%	Miles	%
Arterials	N/A	0	0	0	0	0	0	0	0	0	0	0	0
Collectors	6.24	4.714	21.92%	.451	9.57%	.319	6.77%	1.165	24.71%	2.779	58.95%	0	0
Local Roads	6.18	16.792	78.08%	.226	1.35%	2.521	15.01%	5.133	30.57%	8.024	47.78%	.888	5.29%
Total City	6.19	21.506	100%	.677	3.15%	2.84	13.21%	6.298	29.28%	10.803	50.24%	.888	4.12%

Pavement Condition Trends by Category

Miles of Pavement in Each PASER Category						
Pavement Condition	Bad 0-2	Poor 3-4	Fair 5-6	Good 7-8	Best 9-10	Average PASER Rating
Road Miles 2008 – 17.527	.965	1.210	3.065	5.232	7.05	7.49
Road Miles 2011 – 21.506	.171	2.343	2.928	13.041	3.023	6.91
Road Miles 2017 – 21.506	.678	2.840	6.483	10.802	.703	6.19

ATTACHMENT A

Segment								2008	2011	2017	Length
ID	Route	Route Ahead	Lat	Long	Route Back	Lat	Long	PASER	PASER	PASER	(Miles)
10	10TH ST	W/O B ST	N 41*45.240	W 124*12.468	E/O A ST	N 41*45.217	W 124*12.512	4	7	5	0.057
50	10TH ST	W/O H ST	N 41*45.410	W 124*12.146	E/O G ST	N 41*45.387	W 124*12.193	8	7	6	0.056
60	10TH ST	W/O J ST	N 41*45.467	W 124*12.035	E/O I ST	N 41*45.442	W 124*12.090	10	7	7	0.056
11	10TH ST	D ST	N 41*45.296	W 124*12.361	C ST	N 41*45.268	W 124*12.415	9	8	8	0.056
20	10TH ST	E/O GARY ST	N 41*45.252	W 124*12.443	W/O B ST	N 41*45.240	W 124*12.467	8	8	7	0.028
30	10TH ST	W/O D ST	N 41*45.269	W 124*12.414	E/O GARY ST	N 41*45.253	W 124*12.44	10	8	8	0.029
40	10TH ST	W/O E ST	N 41*45.327	W 124*12.305	W/O D ST	N 41*45.294	W 124*12.360	10	8	8	0.058
70	11TH ST	W/O H ST	N 41*45.452	W 124*12.182	E/O G ST	N 41*45.427	W 124*12.223	7	8	6	0.055
80	2ND ST	W/O B ST	N 41*44.915	W 124*12.160	E/O A ST	N 41*44.891	W 124*12.206	3	4	3	0.057
100	2ND ST	W/O C ST	N 41*44.950	W 124*12.096	E/O B ST	N 41*44.923	W 124*12.148	6	5	9	0.056
110	2ND ST	W/O D ST	N 41*44.978	W 124*12.042	W/O C ST	N 41*44.950	W 124*12.096	8	5	9	0.057
120	2ND ST	W/O E ST	N 41*45.007	W 124*11.990	W/O D ST	N 41*44.978	W 124*12.042	6	5	9	0.057
130	2ND ST	W/O F ST	N 41*45.037	W 124*11.935	W/O E ST	N 41*45.009	W 124*11.991	4	5	9	0.056
140	2ND ST	W/O G ST	N 41*45.060	W 124*11.894	E/O F ST	N 41*45.037	W 124*11.935	5	5	5	0.058
150	2ND ST	W/O H ST	N 41*45.087	W 124*11.837	E/O G ST	N 41*45.061	W 124*11.893	5	7	7	0.056
160	2ND ST	W/O L ST	N 41*45.203	W 124*11.621	E/O K ST	N 41*45.179	W 124*11.663	9	8	8	0.056
170	2ND ST	W/O M ST	N 41*45.232	W 124*11.568	E/O L ST	N 41*45.209	W 124*11.609	8	8	8	0.056
90	2ND ST	W/O N ST	N 41*45.260	W 124*11.516	E/O M ST	N 41*45.237	W 124*11.556	10	9	8	0.057
270	3RD ST	W/O B ST	N 41*44.960	W 124*12.204	E/O A ST	N 41*44.937	W 124*12.247	7	6	6	0.058
280	3RD ST	W/O C ST	N 41*44.986	W 124*12.151	E/O B ST	N 41*44.960	W 124*12.204	6	6	6	0.056
290	3RD ST	W/O D ST	N 41*45.016	W 124*12.096	W/O C ST	N 41*44.986	W 124*12.151	9	6	6	0.057
190	3RD ST	W/O I ST	N 41*45.159	W 124*11.829	E/O H ST	N 41*45.136	W 124*11.868	9	8	7	0.057
200	3RD ST	W/O J ST	N 41*45.189	W 124*11.777	W/O I ST	N 41*45.157	W 124*11.827	10	8	7	0.057
210	3RD ST	W/O K ST	N 41*45.215	W 124*11.719	W/O J ST	N 41*45.188	W 124*11.777	10	8	7	0.056
220	3RD ST	W/O L ST	N 41*45.246	W 124*11.668	W/O K ST	N 41*45.217	W 124*11.721	8	8	7	0.057
230	3RD ST	W/O M ST	N 41*45.280	W 124*11.601	E/O L ST	N 41*45.251	W 124*11.653	4	8	6	0.056
240	3RD ST	W/O N ST	N 41*45.309	W 124*11.550	E/O M ST	N 41*45.279	W 124*11.601	8	8	7	0.058
330	3RD ST	W/O H ST	N 41*45.130	W 124*11.883	E/O G ST	N 41*45.108	W 124*11.925	9	8	8	0.056
180	3RD ST	WEST END	N 41*44.896	W 124*12.316	W/O WENDELL ST	N 41*44.900	W 124*12.307	8	9	7	0.014
250	3RD ST	END	N 41*45.331	W 124*11.505	W/O N ST	N 41*45.309	W 124*11.550	1	9	8	0.112
260	3RD ST	W/O A ST	N 41*44.930	W 124*12.257	W/O WENDELL ST	N 41*44.907	W 124*12.301	9	9		0.056
300	3RD ST	W/O E ST	N 41*45.045	W 124*12.044	W/O D ST	N 41*45.022	W 124*12.085	10	9	8	0.057
310	3RD ST	W/O F ST	N 41*45.073	W 124*11.990	W/O E ST	N 41*45.044	W 124*12.044	9	9	8	0.056
320	3RD ST	W/O G ST	N 41*45.102	W 124*11.937	W/O F ST	N 41*45.073	W 124*11.990	9	9	8	0.057
340	4TH ST	WEST END	N 41*44.919	W 124*12.379	W/O WENDELL ST	N 41*44.940	W 124*12.342	8	5	5	0.043
400	4TH ST	W/O A ST	N 41*44.968	W 124*12.290	W/O WENDELL ST	N 41*44.944	W 124*12.332	7	5	5	0.057
410	4TH ST	W/O B ST	N 41*44.997	W 124*12.234	E/O A ST	N 41*44.974	W 124*12.276	9	5	5	0.056
420	4TH ST	W/O C ST	N 41*45.026	W 124*12.182	E/O B ST	N 41*45.002	W 124*12.224	3	5	4	0.057
350	4TH ST	W/O I ST	N 41*45.202	W 124*11.847	E/O H ST	N 41*45.173	W 124*11.901	9	8	7	0.057
360	4TH ST	W/O J ST	N 41*45.225	W 124*11.807	E/O I ST	N 41*45.202	W 124*11.847	9	8	7	0.057
370	4TH ST	W/O K ST	N 41*45.254	W 124*11.753	E/O J ST	N 41*45.231	W 124*11.794	10	8	7	0.057
380	4TH ST	W/O L ST	N 41*45.283	W 124*11.699	W/O K ST	N 41*45.259	W 124*11.739	9	8	7	0.057
390	4TH ST	W/O M ST	N 41*45.312	W 124*11.645	E/O L ST	N 41*45.288	W 124*11.687	9	8	7	0.057
430	4TH ST	W/O D ST	N 41*45.054	W 124*12.129	E/O C ST	N 41*45.031	W 124*12.173	9	8	8	0.056
440	4TH ST	W/O E ST	N 41*45.083	W 124*12.075	W/O D ST	N 41*45.060	W 124*12.117	9	8	7	0.057
450	4TH ST	W/O F ST	N 41*45.116	W 124*12.010	W/O E ST	N 41*45.089	W 124*12.064	9	8	7	0.057
460	4TH ST	W/O G ST	N 41*45.140	W 124*11.968	E/O F ST	N 41*45.116	W 124*12.010	9	8	6	0.056
470	4TH ST	W/O H ST	N 41*45.167	W 124*11.914	E/O G ST	N 41*45.145	W 124*11.957	10	9	8	0.056
540	5TH ST	W/O O ST	N 41*45.415	W 124*11.568	E/O M ST	N 41*45.357	W 124*11.667	5	3	3	0.108
550	5TH ST	EAST END	N 41*45.442	W 124*11.518	W/O O ST	N 41*45.415	W 124*11.569	n/a	3	2	0.053

Attachment A - Road List by SEGID

Segment								2008	2011	2017	Length
ID	Route	Route Ahead	Lat	Long	Route Back	Lat	Long	PASER	PASER	PASER	(Miles)
570	5TH ST	W/O B ST	N 41*45.045	W 124*12.265	E/O A ST	N 41*45.017	W 124*12.319	8	7	7	0.057
580	5TH ST	W/O C ST	N 41*45.071	W 124*12.209	W/O B ST	N 41*45.045	W 124*12.265	10	7	7	0.057
590	5TH ST	W/O D ST	N 41*45.101	W 124*12.156	W/O C ST	N 41*45.071	W 124*12.209	9	7	6	0.056
600	5TH ST	W/O E ST	N 41*45.127	W 124*12.100	W/O D ST	N 41*45.101	W 124*12.256	8	7	7	0.057
610	5TH ST	W/O F ST	N 41*45.156	W 124*12.047	W/O E ST	N 41*45.127	W 124*12.100	10	7	7	0.057
620	5TH ST	W/O G ST	N 41*45.180	W 124*12.009	W/O F ST	N 41*45.155	W 124*12.047	8	7	6	0.057
490	5TH ST	W/O I ST	N 41*45.245	W 124*11.888	E/O H ST	N 41*45.214	W 124*11.941	8	8	7	0.057
500	5TH ST	W/O J ST	N 41*45.272	W 124*11.830	W/O I ST	N41*45.245	W 124*11.888	7	8	7	0.057
510	5TH ST	W/O K ST	N 41*45.301	W 124*11.777	W/O J ST	N 41*45.272	W 124*11.829	10	8	8	0.056
520	5TH ST	W/O L ST	N 41*45.323	W 124*11.738	W/O K ST	N 41*45.301	W 124*11.777	10	8	8	0.057
530	5TH ST	W/O M ST	N 41*45.352	W 124*11.685	E/O L ST	N 41*45.329	W 124*11.724	10	8	6	0.057
630	5TH ST	W/O H ST	N 41*45.208	W 124*11.953	E/O G ST	N 41*45.185	W 124*11.993	6	8	6	0.056
480	5TH ST	WEST END	N 41*44.956	W 124*12.435	W/O WENDELL ST	N 41*44.982	W 124*12.386	9	9	8	0.059
560	5TH ST	W/O A ST	N41*45.011	W 124*12.328	E/O WENDELL ST	N 41*44*982	W 124*12.386	2	9	7	0.056
640	6TH ST	W/O WENDELL ST	N 41*45.022	W 124*12.425	E/O TAYLOR ST	N 41*44.999	W 124*12.467	6	4	4	0.062
720	6TH ST	W/O G ST	N 41*45.223	W 124*12.046	E/O F ST	N 41*45.199	W 124*12.091	6	4	3	0.056
680	6TH ST	W/O A ST	N 41*45.052	W 124*12.371	E/O WENDELL ST	N 41*45.028	W 124*12.414	8	5	5	0.057
690	6TH ST	W/O B ST	N 41*45.080	W 124*12.319	E/O A ST	N 41*45.057	W 124*12.360	7	5	4	0.056
700	6TH ST	W/O C ST	N 41*45.109	W 124*12.263	E/O B ST	N 41*45.085	W 124*12.308	5	5	4	0.057
710	6TH ST	W/O D ST	N 41*45.136	W 124*12.209	E/O C ST	N 41*45.114	W 124*12.253	6	5	4	0.057
650	6TH ST	W/O K ST	N 41*45.339	W 124*11.834	E/O J ST	N 41*45.316	W 124*11.877	5	7	5	0.057
660	6TH ST	W/O L ST	N 41*45.366	W 124*11.781	E/O K ST	N 41*45.345	W 124*11.823	5	7	5	0.056
670	6TH ST	W/O M ST	N 41*45.396	W 124*11.729	E/O L ST	N 41*45.374	W 124*11.766	5	7	5	0.057
730	6TH ST	W/O H ST	N 41*45.252	W 124*11.994	E/O G ST	N 41*45.229	W 124*12.036	5	7	6	0.057
740	6TH ST	W/O I ST	N 41*45.279	W 124*11.943	E/O H ST	N 41*45.258	W 124*11.983	10	9	8	0.056
750	6TH ST	W/O J ST	N 41*45.309	W 124*11.888	E/O I ST	N 41*45.287	W 124*11.930	10	9	7	0.057
760	7TH ST	W/O TAYLOR ST	N 41*45.032	W 124*12.512	E/O PEBBLE BEACH DR	N 41*45.007	W 124*12.557	7	5	4	0.061
820	7TH ST	W/O M ST	N 41 *45.432	W 124*11.759	E/O L ST	N 41*45.408	W 124*11.800	7	6	4	0.057
870	7TH ST	W/O D ST	N 41*45.173	W 124*12.245	W/O C ST	N 41*45.151	W 124*12.288	6	6	5	0.056
770	7TH ST	W/O H ST	N 41*45.292	W 124*12.029	E/O G ST	N 41*45.262	W 124*12.081	9	7	7	0.056
780	7TH ST	W/O I ST	N 41* 45.318	W 124*11.976	E/O H ST	N 41*45.295	W 124*12.017	2	7	5	0.057
810	7TH ST	W/O L ST	N 41*45.404	W 124*11.814	E/O K ST	N 41*45.384	W 124*11.855	3	7	4	0.056
830	7TH ST	W/O WENDELL ST	N 41*45.065	W 124*12.446	E/O TALYOR ST	N 41*45.036	W 124*12.502	7	7	6	0.056
840	7TH ST	W/O A ST	N 41*45.088	W 124*12.406	W/O WENDELL ST	N 41*45.065	W 124*12.446	8	7	6	0.057
850	7TH ST	W/O B ST	N 41*45.123	W 124*12.339	E/O A ST	N 41*45.095	W 124*12.394	10	7	7	0.056
860	7TH ST	W/O C ST	N 41*45.151	W 124*12.288	E/O B ST	N 41*45.123	W 124*12.339	8	7	7	0.057
880	7TH ST	W/O E ST	N 41*45.209	W 124*12.178	W/O D ST	N 41*45.179	W 124*12.234	6	7	6	0.057
890	7TH ST	W/O F ST	N 41*45.237	W 124*12.121	W/O E ST	N 41*45.209	W 124*12.176	9	7	7	0.057
900	7TH ST	W/O G ST	N 41*45.261	W 124*12.081	E/O F ST	N 41*45.234	W 124*12.125	8	7	7	0.056
790	7TH ST	W/O J ST	N 41*45.346	W 124*11.922	W/O I ST	N 41*45.324	W 124*11.964	6	8	6	0.057
800	7TH ST	W/O K ST	N 41*45.375	W 124*11.866	E/O J ST	N 41*45.352	W 124*11.910	7	8	6	0.057
990	8TH ST	W/O B ST	N 41*45.163	W 124*12.381	E/O A ST	N 41*45.135	W 124*12.433	5	3	3	0.057
1000	8TH ST	W/O C ST	N 41*45.193	W 124*12.326	E/O B ST	N 41*45.163	W 124*12.382	6	3	3	0.057
1010	8TH ST	W/O D ST	N 41*45.221	W 124*12.273	W/O C ST	N 41*45.192	W 124*12.326	4	3	2	0.057
1020	8TH ST	E/O E ST	N 41*45.246	W 124*12.227	W/O D ST	N 41*45.221	W 124*12.272	2	3	3	0.056
910	8TH ST	W/O TAYLOR ST	N 41*45.072	W 124*12.551	E/O PEBBLE BEACH DR	N 41*45.024	W 124*12.624	5	4	3	0.109
920	8TH ST	W/O H ST	N 41*45.330	W 124*12.068	E/O G ST	N 41*45.309	W 124*12.108	3	5	3	0.057
1030	8TH ST	W/O F ST	N 41*45.278	W 124*12.164	E/O E ST	N 41*45.246	W 124*12.226	9	6	6	0.057
1040	8TH ST	W/O G ST	N 41*45.301	W 124*12.120	E/O F ST	N 41*45.278	W 124*12.165	9	6	6	0.056
930	8TH ST	W/O I ST	N 41*45.364	W 124*12.003	E/O H ST	N 41*45.337	W 124*12.056	1	8	4	0.056

Attachment A - Road List by SEGID

Segment								2008	2011	2017	Length
ID	Route	Route Ahead	Lat	Long	Route Back	Lat	Long	PASER	PASER	PASER	(Miles)
940	8TH ST	W/O J ST	N 41*45.388	W 124*11.959	W/O I ST	N 41*45.364	W 124*12.003	4	8	4	0.057
950	8TH ST	W/O K ST	N 41*45.417	W 124*11.906	E/O J ST	N 41*45.394	W 124*11.949	4	8	4	0.057
960	8TH ST	W/O L ST	N 41*45.443	W 124*11.852	E/O K ST	N 41*45.423	W 124*11.895	6	8	6	0.056
970	8TH ST	W/O WENDELL ST	N 41*45.107	W 124*12.486	E/O TAYLOR ST	N 41*45.078	W 124*12.540	8	8	7	0.056
980	8TH ST	W/O A ST	N 41*45.103	W 124*12.445	E/O WENDELL ST	N 41*45.107	W 124*12.486	8	8	7	0.056
1050	9TH ST	E/O GAINARD ST	N 41*45.080	W 124*12.651	E/O PEBBLE BEACH DR	N 41*45*060	W 124*12.691	n/a	9	8	0.030
1060	9TH ST	W/O G ST	N 41*45.314	W 124*12.160	W/O F ST	N 41*45.318	W 124*12.201	10	9	8	0.056
1070	9TH ST	E/O H ST	N 41*45.370	W 124*12.106	W/O G ST	N 41*45.347	W 124*12.146	10	9	8	0.057
1080	9TH ST	W/O I ST	N 41*45.404	W 124*12.039	E/O H ST	N 41*45.377	W 124*12.091	7	9	7	0.057
1090	9TH ST	W/O J ST	N 41*45.433	W 124*11.984	W/O I ST	N 41*45.404	W 124*12.039	3	9	7	0.056
1100	9TH ST	W/O K ST	N 41*45.461	W 124*11.931	W/O J ST	N 41*45.433	W 124*11.983	8	9	7	0.057
1110	9TH ST	W/O L ST	N 41*45.484	W 124*11.893	W/O K ST	N 41*45.461	W 124*11.931	8	9	7	0.056
1120	9TH ST	W/O M ST	N 41*45.513	W 124*11.837	E/O L ST	N 41*45.484	W 124*11.893	10	9	6	0.057
1130	9TH ST	W/O TAYLOR ST	N 41*45.115	W 124*12.578	E/O GAINARD ST	N 41*45.079	W 124*12.651	10	9	8	0.048
1140	9TH ST	W/O WENDELL ST	N 41*45.146	W 124*12.524	W/O TAYLOR ST	N 41*45.115	W 124*12.578	10	9	8	0.047
1150	9TH ST	W/O A ST	N 41*45.170	W 124*12.482	W/O WENDELL ST	N 41*45.145	W 124*12.523	10	9	8	0.048
1160	9TH ST	E/O B ST	N 41*45.204	W 124*12.417	E/O A ST	N 41*45.176	W 124*12.472	10	9	8	0.057
1170	9TH ST	W/O C ST	N 41*45.232	W 124*12.362	E/O B ST	N 41*45.203	W 124*12.417	10	9	8	0.057
1180	9TH ST	W/O D ST	N 41*45.259	W 124*12.306	W/O C ST	N 41*45.232	W 124*12.362	10	9	8	0.056
1190	9TH ST	W/O E ST	N 41*45.283	W 124*12.266	W/O D ST	N 41*45.259	W 124*12.307	10	9	8	0.057
1200	9TH ST	W/O F ST	N 41*45.319	W 124*12.201	W/O E ST	N 41*45.290	W 124*12.253	9	9	8	0.058
1240	A ST	N/O 9TH ST	N 41*45.171	W 124*12.471	N/O 8TH ST	N 41*45.137	W 124*12.440	4	5	5	0.057
1250	A ST	N/O 10TH ST	N 41*45.220	W 124*12.516	N/O 9TH ST	N 41*45.179	W 124*12.479	8	5	5	0.056
1260	A ST	N/O CONDOR ST	N 41*45.332	W 124*12.615	N/O 10TH ST	N 41*45.219	W 124*12.517	9	5	4	0.072
1270	A ST	N/O ESSEX ST	N 41*45.389	W 124*12.678	N/O CONDOR ST	N 41*45.322	W 124*12.614	6	5	4	0.092
1272	A ST	W INDRA ST	N 41*45.416	W 124*12.705	W. Essex St	N 41*45.388	W 124*12.677	5	5	4	0.047
1273	A ST	W INDRA ST	N 41*45.416	W 124*12.705	JACKIE ST	N 41*45.452	W 124*12.738	7	5	5	0.048
1274	A ST	PACIFIC ST	N 41*45.493	W 124*12.806	JACKIE ST	N 41*45.452	W 124*12.738	6	5	5	0.087
1310	A ST	N/O 3RD ST	N 41*44.936	W 124*12.248	N/O 2ND ST	N 41*44.892	W 124*12.206	9	6	6	0.056
1320	A ST	N/O 4TH ST	N 41*44.970	W 124*12.279	N/O 3RD ST	N 41*44.936	W 124*12.248	8	7	6	0.057
1330	A ST	N/O 5TH ST	N 41*45.019	W 124*12.325	N/O 4TH ST	N 41*44.970	W 124*12.279	9	7	6	0.057
1340	A ST	N/O 6TH ST	N 41*45.059	W 124*12.363	N/O 5TH ST	N 41*45.018	W 124*12.325	10	7	6	0.056
1350	A ST	N/O 7TH ST	N 41*45.092	W 124*12.395	N/O 6TH ST	N 41*45.059	W 124*12.363	7	7	6	0.057
1360	A ST	N/O 8TH ST	N 41*45.138	W 124*12.441	N/O 7TH ST	N 41*45.092	W 124*12.395	7	7	5	0.057
3200	AMADOR ST	WASHINGTON BLVD	N 41*46.363	W 124*12.285	327' S/O WASHINGTON BLVD	N 41*46.297	W 124*12.287	10	8	7	0.058
1210	ANZIO ST	S/O CONDOR ST	N 41*45.240	W 124*12.743	N/O 9TH ST	N 41*45.107	W 124*12.616	10	8	7	0.199
1220	ANZIO ST	END	N 41*45.278	W 124*12.782	N/O CONDOR ST	N 41*45.248	W 124*12.750	8	8	8	0.030
1450	B ST	S/O FRONT ST	N 41*44.878	W 124*12.112	N/O BATTERY ST	N 41*44.844	W 124*12.079	5	5	10	0.057
1400	B ST	END	N 41*44.630	W 124*11.852	WDTH CHNG (454' S/O BATTERY ST)	N 41*44.778	W 124*12.002	n/a	7	7	0.221
1410	B ST	N/O 8TH ST	N 41*45.159	W 124*12.383	N/O 7TH ST	N 41*45.125	W 124*12.351	8	7	7	0.057
1420	B ST	S/O 9TH ST	N 41*45.201	W 124*12.421	N/O 8TH ST	N 41*45.168	W 124*12.391	8	7	7	0.057
1430	B ST	S/O 10TH ST	N 41*45.241	W 124*12.459	N/O 9TH ST	N 41*45.209	W 124*12.429	8	7	7	0.056
1460	B ST	N/O 2ND ST	N 41*44.919	W 124*12.151	N/O FRONT ST	N 41*44.878	W 124*12.112	6	7	10	0.057
1470	B ST	N/O 3RD ST	N 41*44.960	W 124*12.190	N/O 2ND ST	N 41*44.927	W 124*12.159	8	7	7	0.056
1480	B ST	N/O 4TH ST	N 41*45.000	W 124*12.228	N/O 3RD ST	N 41*44.967	W 124*12.198	9	7	7	0.057
1490	B ST	S/O 5TH ST	N 41*45.039	W 124*12.266	N/O 4TH ST	N 41*45.007	W 124*12.236	9	7	7	0.057
1500	B ST	N/O 6TH ST	N 41*45.077	W 124*12.306	N/O 5TH ST	N 41*45.046	W 124*12.274	9	7	7	0.057
1510	B ST	N/O 7TH ST	N 41*45.119	W 124*12.344	N/O 6TH ST	N 41*45.084	W 124*12.312	8	7	7	0.056
1440	B ST	S/O BATTERY ST	N 41*44.844	W 124*12.079	WDTH CHNG (454' S/O BATTERY ST)	N 41*44.778	W 124*12.002	9	8	8	0.084
1370	BATTERY ST	E/O B ST	N 41*44.838	W 124*12.090	Lighthouse way	N 41*44.817	W 124*12.129	9	6	6	0.057

Attachment A - Road List by SEGID

Segment ID	Route	Route Ahead	Lat	Long	Route Back	Lat	Long	2008 PASER	2011 PASER	2017 PASER	Length (Miles)
1380	BECKY CT	END	N 41*45.363	W 124*12.600	W/O GARY ST	N 41*45.384	W 124*12.563	10	8	8	0.040
1390	BREEN ST	END	N 41*45.953	W 124*12.222	S/O HARDING ST	N 41*46.036	W 124*12.221	9	7	7	0.102
3190	BREEN ST	HOOVER BLVD	N 41*46.265	W 124*12.219	COOLIDGE AVE	N 41*46.156	W 124*12.215	8	7	7	0.124
3191	BREEN ST	WASHINGTON BLVD	N 41*46.361	W 124*12.219	HOOVER AVE	N 41*46.265	W 124*12.219	8	7	6	0.122
1640	C ST	N/O 6TH ST	N 41*45.107	W 124*12.249	N/O 5TH ST	N 41*45.073	W 124*12.217	6	3	3	0.057
1650	C ST	S/O 7TH ST	N 41*45.149	W 124*12.289	N/O 6TH ST	N 41*45.115	W 124*12.257	4	3	3	0.057
1660	C ST	S/O 8TH ST	N 41*45.188	W 124*12.327	N/O 7TH ST	N 41*45.156	W 124*12.295	4	3	3	0.056
1670	C ST	S/O 9TH ST	N 41*45.228	W 124*12.366	N/O 8TH ST	N 41*45.196	W 124*12.334	6	3	3	0.057
1680	C ST	S/O 10TH ST	N 41*45.268	W 124*12.403	N/O 9TH ST	N 41*45.236	W 124*12.373	1	3	2	0.056
1610	C ST	S/O 3RD ST	N 41*44.988	W 124*12.136	N/O 2ND ST	N 41*44.957	W 124*12.107	9	8	7	0.056
1620	C ST	N/O 4TH ST	N 41*45.028	W 124*12.175	N/O 3RD ST	N 41*44.994	W 124*12.143	10	8	7	0.057
1630	C ST	S/O 5TH ST	N 41*45.067	W 124*12.212	N/O 4TH ST	N 41*45.037	W 124*12.180	10	8	8	0.057
3181	CALIFORNIA ST	COOLIDGE AVE	N 41*46.152	W 124*12.155	HOOVER AVE	N 41*46.252	W 124*12.155	6	4	4	0.123
1520	CALIFORNIA ST	END	N 41*45.943	W 124*12.157	S/O HARDING AVE	N 41*46.035	W 124*12.157	6	6	6	0.111
1530	CALIFORNIA ST	S/O COOLIDGE AVE	N 41*46.143	W 124*12.156	N/O HARDING AVE	N 41*46.046	W 124*12.157	9	8	7	0.124
1530	CALIFORNIA ST	HOOVER BLVD	N 41*46.263	W 124*12.155	WASHINGTON BLVD	N 41*46.361	W 124*12.157	4			
1590	CONDOR ST	W/O GARY ST	N 41*45.335	W 124*12.519	E/O A ST	N 41*45.316	W 124*12.605	5	7	5	0.092
3130	COOLIDGE AVE	W/O OREGON ST	N 41*46.155	W 124*12.097	258' W/O BREEM	N 41*46*152	W 124*12.281	3	7	6	0.174
3141	COOLIDGE AVE	MARSHALL ST	N 41*46.155	W 124*12.030	OREGON ST	N 41*46*152	W 124*12.097	8	7	7	0.057
3142	COOLIDGE AVE	NORTHCREST	N 41*46.155	W 124*11.971	MARSHALL ST	N 41*46*152	W 124*12.030	9	7	7	0.048
1600	COOPER AVE	W/O HWY 101	N 41*45.714	W 124*11.868	N/O J ST	N 41*45.645	W 124*12.049	9	7	7	0.134
1710	D ST	S/O 3RD ST	N 41*45.012	W 124*12.084	N/O 2ND ST	N 41*44.980	W 124*12.054	3	4	3	0.057
1720	D ST	S/O 4TH ST	N 41*45.051	W 124*12.122	N/O 3RD ST	N 41*45.021	W 124*12.093	4	4	3	0.057
1730	D ST	S/O 5TH ST	N 41*45.093	W 124*12.162	N/O 4TH ST	N 41*45.060	W 124*12.130	1	4	3	0.057
1740	D ST	N/O 6TH ST	N 41*45.134	W 124*12.200	N/O 5TH ST	N 41*45.100	W 124*12.167	8	4	4	0.057
1750	D ST	S/O 7TH ST	N 41*45.173	W 124*12.236	N/O 6TH ST	N 41*45.141	W 124*12.206	7	4	4	0.057
1760	D ST	S/O 8TH ST	N 41*45.212	W 124*12.276	N/O 7TH ST	N 41*45.180	W 124*12.246	5	4	3	0.057
1770	D ST	S/O 9TH ST	N 41*45.253	W 124*12.313	N/O 8TH ST	N 41*45.221	W 124*12.284	2	4	3	0.057
1780	D ST	S/O 10TH ST	N 41*45.293	W 124*12.352	N/O 9TH ST	N 41*45.262	W 124*12.321	7	4	3	0.055
1700	D ST	S/O 2ND ST	N 41*44.971	W 124*12.047	N/O FRONT ST	N 41*44.939	W 124*12.015	2	7	7	0.058
1690	DORAN CT	END	N 41*45.136	W 124*12.749	N/O GAINARD ST	N 41*45.147	W 124*12.730	5	5	4	0.020
1880	E ST	S/O 5TH ST	N 41*45.124	W 124*12.103	N/O 4TH ST	N 41*45.093	W 124*12.072	2	3	3	0.057
1910	E ST	N/O 10TH ST	N 41*45.326	W 124*12.295	N/O 9TH ST	N 41*45.295	W 124*12.265	6	6	5	0.055
1930	E ST	S/O PACIFIC AVE	N 41*45.492	W 124*12.451	PVMNT CHNG (192' N/O 10TH ST)	N 41*45.358	W 124*12.234	n/a	6	6	0.081
1850	E ST	S/O 2ND ST	N 41*45.005	W 124*11.989	N/O FRONT ST	N 41*44.973	W 124*11.959	7	7	7	0.061
1920	E ST	PVMNT CHNG (192' N/O 10TH ST)	N 41*45.358	W 124*12.234	N/O 10TH ST	N 41*45.333	W 124*12.301	8	7	6	0.037
1890	E ST	S/O 8TH ST	N 41*45.250	W 124*12.220	N/O 7TH ST	N 41*45.214	W 124*12.187	10	8	7	0.056
1900	E ST	S/O 9TH ST	N 41*45.286	W 124*12.257	N/O 8TH ST	N 41*45.257	W 124*12.228	10	8	8	0.057
1860	E ST	S/O 3RD ST	N 41*45.043	W 124*12.026	N/O 2ND ST	N 41*45.013	W 124*11.996	10	9	9	0.057
1870	E ST	S/O 4TH ST	N 41*45.085	W 124*12.066	N/O 3RD ST	N 41*45.053	W 124*12.034	10	9	9	0.057
1790	ELK VALLEY RD	CITY LIMIT (387' E/O HWY 101)	N 41*45.158	W 124*11.039	N/O HWY 101	N 41*45.141	W 124*11.095	n/a	8	6	0.080
1830	ESSEX ST	W/O GARY ST	N 41*45.427	W 124*12.580	E/O A ST	N 41*45.380	W 124*12.663	10	7	7	0.085
1840	ESSEX ST	W/O MARGIE ST	N 41*45.449	W 124*12.540	W/O GARY ST	N 41*45.428	W 124*12.580	10	7	7	0.059
2060	F ST	S/O 9TH ST	N 41*45.310	W 124*12.208	N/O 8TH ST	N 41*45.276	W 124*12.178	1	3	2	0.057
2010	F ST	S/O 3RD ST	N 41*45.070	W 124*11.997	S/O 2ND ST	N 41*45.038	W 124*11.945	9	7	8	0.056
2020	F ST	N/O 4TH ST	N 41*45.111	W 124*12.016	N/O 3RD ST	N 41*45.077	W 124*11.984	10	7	8	0.057
2030	F ST	S/O 5TH ST	N 41*45.150	W 124*12.054	N/O 4TH ST	N 41*45.119	W 124*12.024	9	7	8	0.057
2040	F ST	N/O 7TH ST	N 41*45.150	W 124*12.054	55' S/O 6TH ST	N 41*45.185	W 124*12.084	10	8	8	0.056
2050	F ST	N/O 8TH ST	N 41*45.262	W 124*12.170	N/O 7TH ST	N 41*45.273	W 124*12.139	8	8	8	0.056
2000	F ST	S/O 2ND ST	N 41*45.030	W 124*11.938	N/O FRONT ST	N 41*44.999	W 124*11.908	3	9	5	0.061

Attachment A - Road List by SEGID

Segment ID	Route	Route Ahead	Lat	Long	Route Back	Lat	Long	2008 PASER	2011 PASER	2017 PASER	Length (Miles)
1970	FRONT ST	W/O I ST	N 41*45.079	W 124*11.751	W/O H ST	N 41*45.050	W 124*11.802	4	2	2	0.057
1971	FRONT ST	K ST	N 41*45.137	W 124*11.644	PLAY ST	N 41*45.108	W 124*11.695	1	2	2	0.052
1972	FRONT ST	I ST	N 41*45.078	W 124*11.752	PLAY ST	N 41*45.108	W 124*11.695	2	2	2	0.062
1973	FRONT ST	H ST	N 41*45.052	W 124*11.808	G ST	N 41*45.021	W 124*11.859	3	3	2	0.055
1974	FRONT ST	F ST	N 41*44.992	W 124*11.913	G ST	N 41*45.021	W 124*11.859	4	3	2	0.057
1975	FRONT ST	E ST	N 41*44.965	W 124*11.966	F ST	N 41*44.992	W 124*11.913	2	3	2	0.057
1976	FRONT ST	D ST	N 41*44.935	W 124*12.022	E ST	N 41*44.965	W 124*11.967	3	3	2	0.058
1990	FRONT ST	W/O N ST	N 41*45.223	W 124*11.479	E/O M ST	N 41*45.198	W 124*11.524	2	4	4	0.057
1940	FRONT ST	W/O B ST	N 41*44.879	W 124*12.127	LIGHTHOUSE WAY	N 41*44.856	W 124*12.170	9	7	6	0.057
	FRONT ST	K ST	N 41*45.137	W 124*11.644	L ST	N 41*45.163	W 124*11.593			2	
1950	FRONT ST	W/O D ST	N 41*44.935	W 124*12.022	W/O B ST	N 41*44.885	W 124*12.115	10	7	6	0.113
1980	FRONT ST	W/O M ST	N 41*45.192	W 124*11.537	E/O L ST	N 41*45.169	W 124*11.576	10	9	8	0.057
2170	G ST	N/O 11TH ST	N 41*45.424	W 124*12.228	N/O 10TH ST	N 41*45.394	W 124*12.198	8	8	7	0.057
2180	G ST	S/O PACIFIC AVE	N 41*45.491	W 124*12.290	N/O 11TH ST	N 41*45.430	W 124*12.236	8	8	7	0.077
2190	G ST	N/O 3RD ST	N 41*45.101	W 124*11.921	S/O 2ND ST	N 41*45.070	W 124*11.892	9	8	7	0.057
2200	G ST	N/O 4TH ST	N 41*45.143	W 124*11.961	N/O 3RD ST	N 41*45.109	W 124*11.929	9	8	7	0.056
2210	G ST	N/O 5TH ST	N 41*45.181	W 124*11.998	N/O 4TH ST	N 41*45.149	W 124*11.968	9	8	7	0.057
2220	G ST	N/O 6TH ST	N 41*45.223	W 124*12.039	N/O 5TH ST	N 41*45.189	W 124*12.006	9	8	7	0.057
2230	G ST	N/O 7TH ST	N 41*45.263	W 124*12.075	N/O 6TH ST	N 41*45.230	W 124*12.045	9	8	7	0.056
2240	G ST	N/O 8TH ST	N 41*45.303	W 124*12.114	N/O 7TH ST	N 41*45.270	W 124*12.083	9	8	7	0.056
2250	G ST	S/O 9TH ST	N 41*45.343	W 124*12.153	N/O 8TH ST	N 41*45.310	W 124*12.121	9	8	7	0.057
2260	G ST	N/O 10TH ST	N 41*45.383	W 124*12.189	N/O 9TH ST	N 41*45.354	W 124*12.160	8	8	7	0.057
2160	G ST	S/O 2ND ST	N 41*45.060	W 124*11.883	N/O FRONT ST	N 41*45.029	W 124*11.852	10	9	8	0.060
2070	GAINARD ST	N/O CONDOR ST	N 41*45.215	W 124*12.787	N/O 9TH ST	N 41*45.084	124*12.660	8	7	6	0.198
2080	GAINARD ST	N/O ESSEX ST	N 41*45.317	W 124*12.833	N/O CONDOR ST	N 41*45.224	W 124*12.794	9	7	6	0.051
2090	GAINARD ST	N/O INDRA	N 41*45.360	W 124*12.833	N/O ESSEX ST	N 41*45.327	W 124*12.832	9	7	7	0.047
2100	GAINARD ST	N/O JACKIE ST	N 41*45.411	W 124*12.833	N/O INDRA ST	N 41*45.368	W 124*12.833	9	7	7	0.051
2110	GAINARD ST	END	N 41*45.451	W 124*12.834	N/O JACKIE ST	N 41*45.411	W 124*12.833	9	7	7	0.047
2120	GARY ST	60' N/O CONDOR ST	N 41*45.353	W 124*12.523	N/O 10TH ST	N 41*45.260	W 124*12.435	7	7	7	0.120
2130	GARY ST	S/O ESSEX ST	N 41*45.423	W 124*12.587	60' N/O CONDOR ST	N 41*45.354	W 124*12.523	8	7	6	0.064
2140	GRANT AVE	E/O MARSHALL ST	N 41*45.953	W 124*12.022	E/O OREGON ST	N 41*45.958	W 124*12.090	10	8	7	0.056
2150	GRANT CT	END	N 41*45.948	W 124*11.987	E/O MARSHALL ST	N 41*45.953	W 124*12.022	10	8	7	0.030
2350	H ST	N/O 2ND ST	N 41*45.085	W 124*11.831	N/O FRONT ST	N 41*45.058	W 124*11.797	8	8	6	0.061
2360	H ST	N/O 11TH ST	N 41*45.448	W 124*12.177	N/O 10TH ST	N 41*45.415	W 124*12.145	9	8	5	0.057
2370	H ST	S/O PACIFIC AVE	N 41*45.489	W 124*12.218	N/O 11TH ST	N 41*45.456	W 124*12.185	10	8	7	0.057
2380	H ST	N/O 3RD ST	N 41*45.126	W 124*11.869	N/O 2ND ST	N 41*45.094	W 124*11.839	8	8	6	0.056
2390	H ST	N/O 4TH ST	N 41*45.167	W 124*11.906	N/O 3RD ST	N 41*45.135	W 124*11.878	9	8	7	0.057
2400	H ST	N/O 5TH ST	N 41*45.207	W 124*11.945	N/O 4TH ST	N 41*45.175	W 124*11.917	9	8	7	0.057
2410	H ST	N/O 6TH ST	N 41*45.248	W 124*12.007	N/O 5TH ST	N 41*45.217	W 124*11.953	8	8	6	0.057
2420	H ST	N/O 7TH ST	N 41*45.286	W 124*12.024	N/O 6TH ST	N 41*45.255	W 124*11.992	9	8	6	0.056
2430	H ST	N/O 8TH ST	N 41*45.328	W 124*12.063	N/O 7TH ST	N 41*45.295	W 124*12.030	9	8	6	0.057
2440	H ST	S/O 9TH ST	N 41*45.368	W 124*12.098	N/O 8TH ST	N 41*45.336	W 124*12.068	9	8	6	0.056
2450	H ST	N/O 10TH ST	N 41*45.409	W 124*12.138	N/O 9TH ST	N 41*45.377	W 124*12.107	9	8	5	0.057
2270	HARDING AVE	W/O BREEN ST	N 41*46.038	W 124*12.213	CITY LIMIT	N 41*46.042	W 124*12.287	10	8	8	0.056
2280	HARDING AVE	W/O CALIFORNIA ST	N 41*46.038	W 124*12.147	W/O BREEN ST	N 41*46.038	W 124*12.213	10	8	6	0.057
2290	HARDING AVE	W/O OREGON ST	N 41*46.038	W 124*12.081	W/O CALIFORNIA ST	N 41*46.038	W 124*12.147	10	8	6	0.057
2300	HARDING AVE	W/O MARSHALL ST	N 41*46.038	W 124*12.014	W/O OREGON ST	N 41*46.038	W 124*12.081	10	8	7	0.057
2310	HARDING AVE	W/O NORTHCREST DR	N 41*46.038	W 124*11.936	W/O MARSHALL ST	N 41*46.038	W 124*12.014	10	8	7	0.085
2320	HARDING AVE	W/O HARROLD ST	N 41*46.038	W 124*11.832	E/O NORTHCREST	N 41*46.038	W 124*11.909	6	8	5	0.069
3151	HOOVER AVE	CALIFORNIA ST	N 41*46.258	W 124*12.152	OREGON ST	N 41*46.258	W 124*12.089	6	5	5	0.057

Attachment A - Road List by SEGID

Segment ID	Route	Route Ahead	Lat	Long	Route Back	Lat	Long	2008 PASER	2011 PASER	2017 PASER	Length (Miles)
3152	HOOVER AVE	OREGON ST	N 41*46.258	W 124*12.089	NORTHCREST	N 41*46.261	W 124*12.007	8	5	5	0.075
3153	HOOVER AVE	BREEN ST	N 41*46.260	W 124*12.216	CALIFORNIA ST	N 41*46.258	W 124*12.152	7	5	5	0.057
2340	HOWE DR	46' E/O STAMPS WY	N 41*44.942	W 124*11.701	E/O B ST	N 41*44.822	W 124*11.927	8	7	7	0.261
2341	HOWE DR	2340 (howe)	N 41*44.822	W 124*11.927	E/O B ST	N 41*44.842	W 124*12.074	8	10	10	0.150
2460	HUNTINGTON ST	S/O CONDOR ST	N 41*45.288	W 124*12.652	N/O 9TH ST	N 41*45.157	W 124*12.526	7	8	8	0.199
2470	HUNTINGTON ST	S/O ESSEX ST	N 41*45.354	W 124*12.714	N/O CONDOR ST	N 41*45.298	W 124*12.660	9	8	8	0.092
2500	I ST	S/O 3RD ST	N 41*45.158	W 124*11.815	296' N/O FRONT ST	N 41*45.087	W 124*11.743	7	8	7	0.118
2510	I ST	N/O 4TH ST	N 41*45.198	W 124*11.852	N/O 3RD ST	N 41*45.166	W 124*11.823	10	8	8	0.056
2520	I ST	S/O 5TH ST	N 41*45.239	W 124*11.891	N/O 4TH ST	N 41*45.207	W 124*11.861	10	8	8	0.057
2530	I ST	N/O 6TH ST	N 41*45.281	W 124*11.930	N/O 5TH ST	N 41*45.249	W 124*11.899	10	8	8	0.057
2540	I ST	S/O 7TH ST	N 41*45.321	W 124*11.968	N/O 6TH ST	N 41*45.287	W 124*11.937	10	8	8	0.057
2550	I ST	S/O 8TH ST	N 41*45.361	W 124*12.007	N/O 7TH ST	N 41*45.328	W 124*11.975	10	8	8	0.056
2560	I ST	S/O 9TH ST	N 41*45.402	W 124*12.042	N/O 8TH ST	N 41*45.366	W 124*12.016	10	8	8	0.056
2570	I ST	N/O 10TH ST	N 41*45.441	W 124*12.081	N/O 9TH ST	N 41*45.409	W 124*12.052	9	8	8	0.056
2640	J ST	N/O 7TH ST	N 41*45.345	W 124*11.914	N/O 6TH ST	N 41*45.304	W 124*11.876	6	7	6	0.057
2650	J ST	N/O 8TH ST	N 41*45.386	W 124*11.954	N/O 7TH ST	N 41*45.345	W 124*11.914	6	7	6	0.056
2660	J ST	S/O 9TH ST	N 41*45.425	W 124*11.989	N/O 8TH ST	N 41*45.385	W 124*11.953	6	7	6	0.057
2670	J ST	N/O 10TH)	N 41*45.466	W 124*12.030	N/O 9TH ST	N 41*45.435	W 124*11.999	7	7	4	0.056
2671	J ST	CITY LIMIT	N 41*45.496	W 124*12.056	10TH ST	N 41*45.466	W 124*12.030	8	7	4	0.032
2610	J ST	N/O 4TH ST	N 41*45.224	W 124*11.800	N/O 3RD ST	N 41*45.192	W 124*11.769	9	8	8	0.057
2620	J ST	S/O 5TH ST	N 41*45.264	W 124*11.837	N/O 4TH ST	N 41*45.224	W 124*11.800	8	8	7	0.057
2630	J ST	N/O 6TH ST	N 41*45.305	W 124*11.877	N/O 5TH ST	N 41*45.272	W 124*11.847	7	8	6	0.057
2580	JACCARD ST	S/O CONDOR ST	N 41*45.260	W 124*12.699	N/O 9TH ST	N 41*45.126	W 124*12.575	9	7	7	0.199
2590	JACCARD ST	S/O ESSEX ST	N 41*45.327	W 124*12.761	N/O CONDOR ST	N 41*45.268	W 124*12.708	9	7	7	0.093
2600	JACKIE ST	W/O A ST	N 41*45.443	W 124*12.742	E/O GAINARD ST	N 41*45.403	W 124*12.828	10	7	7	0.077
2690	K ST	S/O 2ND ST	N 41*45.177	W 124*11.665	N/O FRONT ST	N 41*45.146	W 124*11.638	n/a	6	5	0.061
2710	K ST	S/O 4TH ST	N 41*45.264	W 124*11.753	N/O 3RD ST	N 41*45.225	W 124*11.714	8	6	6	0.057
2720	K ST	S/O 5TH ST	N 41*45.297	W 124*11.783	N/O 4TH ST	N 41*45.265	W 124*11.753	7	6	6	0.057
2730	K ST	N/O 6TH ST	N 41*45.345	W 124*11.830	N/O 5TH ST	N 41*45.305	W 124*11.791	9	7	7	0.057
2740	K ST	N/O 7TH ST	N 41*45.385	W 124*11.868	N/O 6TH ST	N 41*45.345	W 124*11.829	9	7	7	0.057
2750	K ST	N/O 8TH ST	N 41*45.425	W 124*11.906	N/O 7TH ST	N 41*45.385	W 124*11.867	9	7	7	0.056
2760	K ST	S/O 9TH ST	N 41*45.458	W 124*11.937	N/O 8TH ST	N 41*45.424	W 124*11.906	5	7	6	0.057
2770	K ST	CITY LIMIT (224' N/O 9TH)	N 41*45.495	W 124*11.963	N/O 9TH ST	N 41*45.466	W 124*11.943	7	7	5	0.044
2700	K ST	S/O 3RD ST	N 41*45.214	W 124*11.706	S/O 2ND ST	N 41*45.176	W 124*11.666	10	9	8	0.056
2680	KING ST	RV PARK	N 41*45.113	W 124*10.971	N/O HWY 101	N 41*45.082	W 124*11.009	8	7	7	0.052
1230	LIGHTHOUSE WY	BATTERY ST	N 41*44.815	W 124*12.135	END	N 41*44.776	W 124*12.096	8	7	6	0.057
1290	LIGHTHOUSE WY	FRONT ST	N 41*44.857	W 124*12.174	BATTERY ST	N 41*44.815	W 124*12.135	8	7	6	0.057
2780	LINCOLN CT	END	N 41*46.069	W 124*12.208	N/O HARDING ST	N 41*46.046	W 124*12.209	10	9	8	0.032
2790	LINNET CT	END	N 41*45.169	W 124*12.787	N/O GAINARD ST	N 41*45.181	W 124*12.767	5	6	5	0.024
2801	MARGIE ST	END	N 41*45.424	W 124*12.506	PACIFIC AVE	N 41*45.491	W 124*12.552	6	6	6	0.042
2810	MARSHALL ST	S/O HARDING AVE	N 41*46.038	W 124*12.020	N/O GRANT AVE	N 41*45.958	W 124*12.020	5	8	5	0.100
2820	MARSHALL ST	S/O COOLIDGE AVE	N 41*46.147	W 124*12.023	N/O HARDING AVE	N 41*46.049	W 124* 12.020	7	8	7	0.128
2830	MASON CT	END	N 41*46.110	W 124*12.268	W/O CALIFORNIA ST	N 41*46.100	W 124*12.164	9	7	7	0.096
2870	N ST	S/O 2ND ST	N 41*45.266	W 124*11.515	S/O FRONT ST	N 41*45.220	W 124*11.470	2	7	7	0.056
2880	N ST	S/O 3RD ST	N 41*45.299	W 124*11.546	S/O 2ND ST	N 41*45.267	W 124*11.516	8	7	7	0.057
2860	N ST	S/O FRONT ST	N 41*45.219	W 124*11.469	N/O HWY 101	N41*45.199	W 124*11.437	9	8	7	0.061
2840	NORTHCREST	N/O HARDING AVE	N 41*45.034	W 124*11.929	N/O WILSON AVE	N 41*45.924	W 124*11.889	6	9	8	0.135
2850	NORTHCREST	N/O WILSON AVE	N 41*45.925	W 124*11.889	W/O HWY 101	N 41*45.809	W 124*11.834	6	9	8	0.161
3160	OREGON ST	HOOVER AVE	N 41*46.252	W 124*12.091	COOLIDGE AVE	N 41*46.155	W 124*12.091	7	6	5	0.122
2890	OREGON ST	S/O HARDING AVE	N 41*46.035	W 124*12.091	N/O GRANT AVE	N 41.45.957	W 124*12.090	9	8	6	0.099
2900	OREGON ST	S/O COOLIDGE AVE	N 41*46.144	W 124*12.092	N/O HARDING AVE	N 41*46.046	W 124*12.091	6	8	5	0.126

Attachment A - Road List by SEGID

Segment ID	Route	Route Ahead	Lat	Long	Route Back	Lat	Long	2008 PASER	2011 PASER	2017 PASER	Length (Miles)
3170	OREGON ST	WASHINGTON BLVD	N 41*46.357	W 124*12.094	243' S/O WASHINGTON BLVD	N 41*46.321	W 124*12.090	10	9	9	0.045
2930	PEBBLE BEACH DR	N/O 9TH ST	N 41*45.060	W 124*12.699	N/O 8TH ST	N 41*45.017	W 124*12.642	8	7	6	0.078
2940	PEBBLE BEACH DR	PVMNT CHNG (700' N/O 9TH ST)	N 41*45.131	W 124*12.819	N/O 9TH ST	N 41*45.060	W 124*12.699	7	7	6	0.021
2910	PEBBLE BEACH DR	N/O 7TH ST	N 41*45.005	W 124*12.562	W/O TAYLOR ST	N 41*44.990	W 124*12.469	10	9	8	0.087
2920	PEBBLE BEACH DR	N/O 8TH ST	N 41*45.015	W 124*12.642	N/O 7TH ST	N 41*45.001	W 124*12.561	10	9	8	0.074
2950	PEBBLE BEACH DR	CITY LIMIT (76 ' N/O CONDOR ST)	N 41*45.212	W 124*12.870	PVMNT CHNG (700' N/O 9TH ST)	N 41*45.130	W 124*12.821	n/a	9	8	0.108
2960	PLAY ST	S/O FRONT ST	N 41*45.096	W 124*11.684	E/O STAMPS WY	N 41*44.997	W 124*11.735	n/a	8	8	0.082
2970	STAMPS WY	S/O PLAY ST	N 41*44.992	W 124*11.731	N/O HOWE DR	N 41*44.941	W 124*11.701	7	7	7	0.068
3210	STAMPS WY	S/O FRONT ST	N 41*45.046	W 124*11.785	S/O PLAY ST	N41*44.500	W 124*11.740	n/a	9	9	0.079
2980	SUNSET CIR	SUNSET CIR	N 41*45.124	W 124*11.168	S/O HWY 101	N 41*45.171	W 124*11.445	6	3	3	0.128
3000	TAYLOR ST	S/O 7TH ST	N 41*45.036	W 124*12.505	N/O 6TH ST	N 41*45.002	W 124*12.473	8	5	4	0.056
3010	TAYLOR ST	N/O 8TH ST	N 41*45.083	W 124*12.549	S/O 7TH ST	N 41*45.042	W 124*12.510	7	5	5	0.057
3020	TAYLOR ST	S/O 9TH ST	N 41*45.114	W 124*12.580	N/O 8TH ST	N 41*45.083	W 124*12.549	6	5	5	0.057
2990	TAYLOR ST	N/O 6TH ST	N 41*44.990	W 124*12.469	N/O 5TH ST	N 41*44.958	W 124*12.430	7	7	6	0.061
3030	TRUMAN CT	END	N 41*46.069	W 124*12.251	N/O HARDING ST	N 41*46.048	W 124*12.249	9	9	9	0.031
3350	W CONDOR	GAINARD ST	N 41*45.215	W 124*12.799	PEBBLE BEACH DR	N 41*45.190	W 124*12.845	5	5	5	0.060
3310	W CONDOR	HUNTINGTON ST	N 41*45.286	W 124*12.665	A ST	N 41*45.312	W 124*12.619	9	7	6	0.049
3320	W CONDOR	JACCARD ST	N 41*45.262	W 124*12.711	HUNTINGTON ST	N 41*45.287	W 124*12.2665	9	7	6	0.047
3330	W CONDOR	ANZIO ST	N 41*45.239	W 124*12.754	JACCARD ST	N41*45.263	W 124*12.711	7	7	6	0.048
3340	W CONDOR	GAINARD ST	N 41*45.220	W 124*12.789	ANZIO ST	N 41*45.239	W 124*12.754	9	7	6	0.048
3360	W ESSEX	JACCARD ST	N 41*45.333	W 124*12.756	GAINARD ST	N 41*45.318	W 124*12.826	10	8	7	0.061
3370	W ESSEX	HUNTINGTON ST	N 41*45.357	W 124*12.712	JACCARD ST	N 41*45.334	W 124*12.756	10	8	7	0.047
3380	W ESSEX	A ST	N 41*45.375	W 124*12.675	HUNTINGTON ST	N 41*45.358	W 124*12.711	9	8	7	0.049
2480	W INDRA ST	W/O A ST	N 41*45.411	W 124*12.714	E/O GAINARD ST	N 41*45.362	W 124*12.828	8	8	7	0.086
3040	WALTON ST	END	N 41*45.073	W 124*11.123	HWY 101	N 41*45.108	W 124*11.080	4	6	6	0.065
3080	WENDELL ST	N/O 6TH ST	N 41*45.019	W 124*12.415	N/O 5TH ST	N 41*44.986	W 124*12.382	2	3	3	0.056
3090	WENDELL ST	S/O 7TH ST	N 41*45.060	W 124*12.453	N/O 6TH ST	N 41*45.025	W 124*12.421	8	3	3	0.056
3100	WENDELL ST	N/O 8TH ST	N 41*45.098	W 124*12.491	N/O 7TH ST	N 41*45.066	W 124*12.459	2	3	3	0.057
3110	WENDELL ST	S/O 9TH ST	N 41*45.141	W 124*12.527	N/O 8TH ST	N 41*45.106	W 124*12.496	3	3	3	0.057
3070	WENDELL ST	N/O 5TH ST	N 41*44.979	W 124*12.375	N/O 4TH ST	N 41*44.945	W 124*12.344	6	4	3	0.057
3050	WENDELL ST	SOUTH END	N 41*44.889	W 124*12.286	S/O 3RD ST	N 41*44.898	W 124*12.299	n/a	8	8	0.017
3060	WENDELL ST	N/O 4TH ST	N 41*44.938	W 124*12.338	N/O 3RD ST	N 41*44.905	W 124*12.306	10	8	8	0.057
12	WILLIAMS	W/O HWY 101			E/O			8	7		0.185
3120	WILSON AVE	W/O HWY 101	N 41*45.931	W 124*11.717	HAROLD	N 41*45.930	W 124*11.781	8	9	8	0.014
3400	WILSON AVE	HAROLD	N 41*45.931	W 124*11.781	NORTHCREST	N 41*45.930	W 124*11.873	8	9	8	0.048